

---

# pure::variants Server Administration Plug-In Manual

pure-systems GmbH

Version 3.2.19 for pure::variants 3.2

Copyright © 2003-2016 pure-systems GmbH

2016

## Table of Contents

1. Introduction .....	1
2. Import Administration Project .....	1
3. Manage Users and Roles .....	4
3.1. Create Users and Roles .....	5
3.2. Modify Users and Roles .....	6
3.3. Change User Passwords .....	6
3.4. Change assigned Roles for a User .....	6
3.5. Delete Users and Roles .....	7
4. Server Command Line Options .....	7

## 1. Introduction

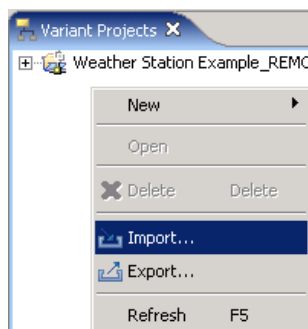
This pure::variants plug-in allows the administration of a remote server's users and roles. It provides an editor to create/delete/modify users or roles and assign users to roles or vice versa. These operations require administrative access rights. The access to the administration database of the remote server is realized by a special administration project.

A printable version of this document is [available](#).

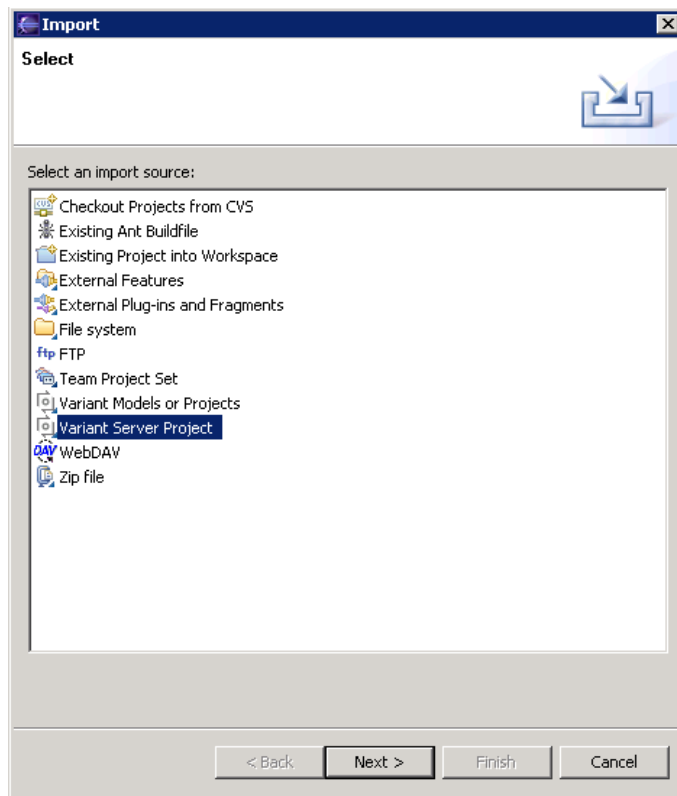
## 2. Import Administration Project

To import the administration project (ADMIN) of an existing remote server right click in the “Variant Projects” view and select “Import...” from the context menu.

**Figure 1. Import from context menu**

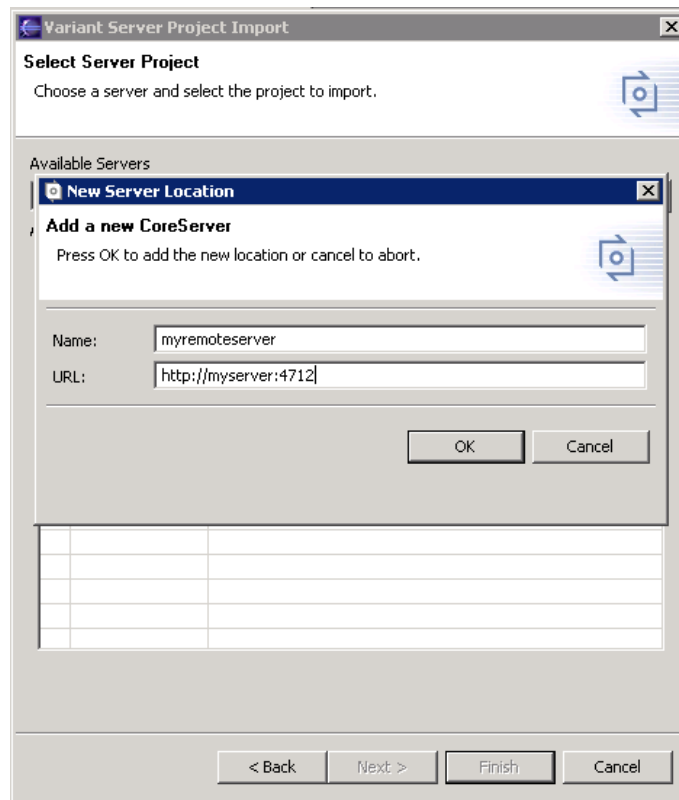


Select the “Variant Server Project” item from the list and press “Next”.

**Figure 2. Import Type**

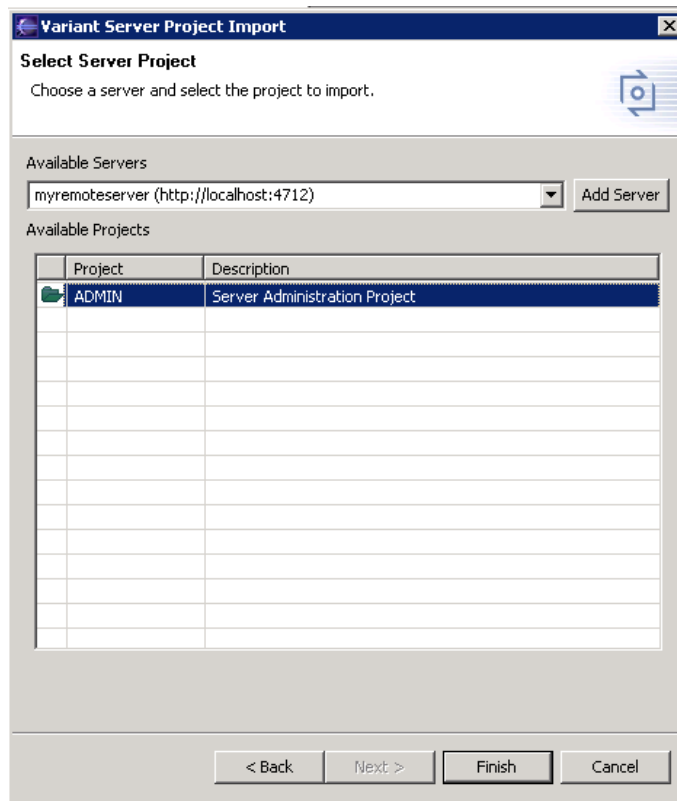
The next wizard page contains a list with all “Available Servers”. You can choose one of them and after selection a connection is opened to the selected server. If you haven't logged in before a login dialog pops up. Enter your account data. The list of projects is filled with all available projects of the currently selected server.

If you cannot see the server you want to administrate in the list, press the “Add server” button. A dialog pops up which allows you to enter a short description of the server and its url in the form “http://servername:port”.

**Figure 3. Add a new remote server**

After entering the correct values of your server press “OK”. If the values are correct and the server is running, a dialog pops up for entering your account data (username and password) if you are not already connected to that server. If you have entered the valid account data, a list of all projects for the current server are shown in a list. You are not allowed to import projects with red (lock) icons because you don't have permissions on them. If the “ADMIN” project has a green (folder) icon, select it and press finish (otherwise contact the server administrator).

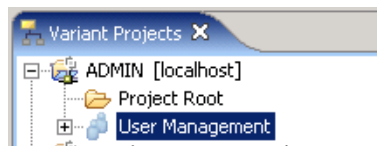
**Figure 4. Select the “ADMIN” project**



### 3. Manage Users and Roles

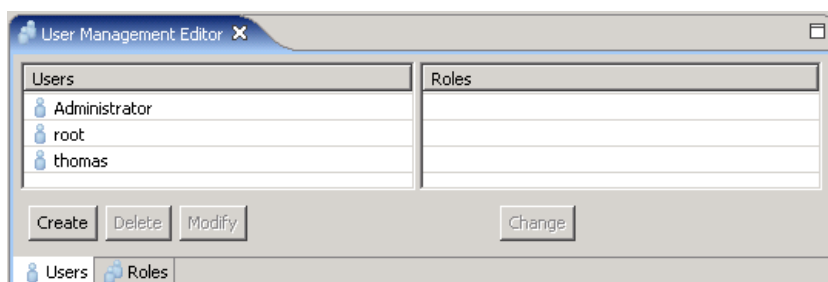
To manage users and roles double click the “User Management” item in the “ADMIN” project.

**Figure 5. Open User Management**

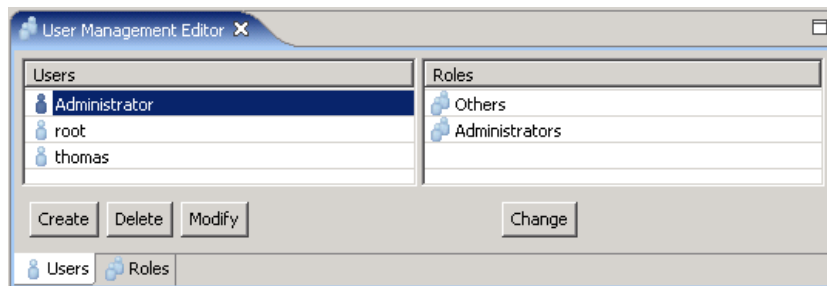


The “User Management” editor opens and shows all available users in the left table. Initially after installation there are three users with full administrative rights. “Administrator”, “root” and the user who started the server the first time (if he is different from “root” and “Administrator”).

**Figure 6. “UserManagement” editor**

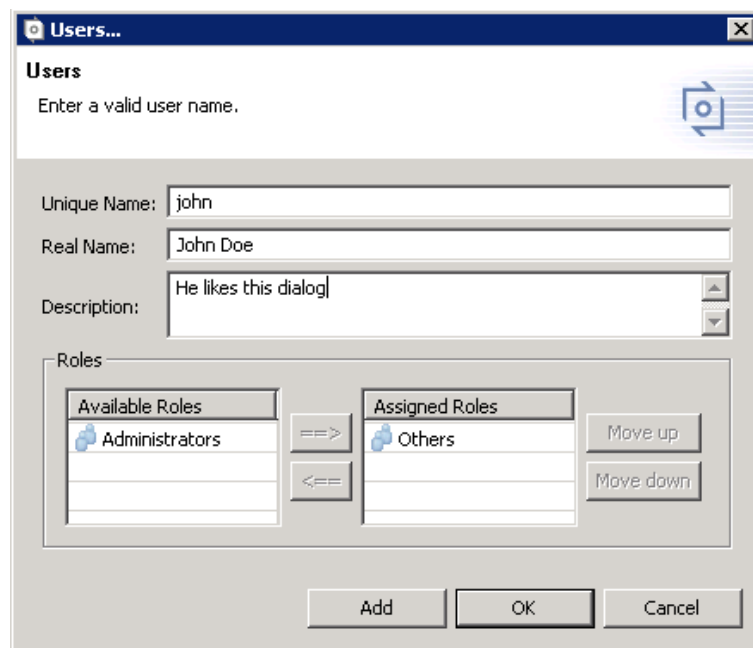


If you select a user in the table, the right table shows all roles assigned to this user. Initially there are two roles named “Administrators” and “Others”.

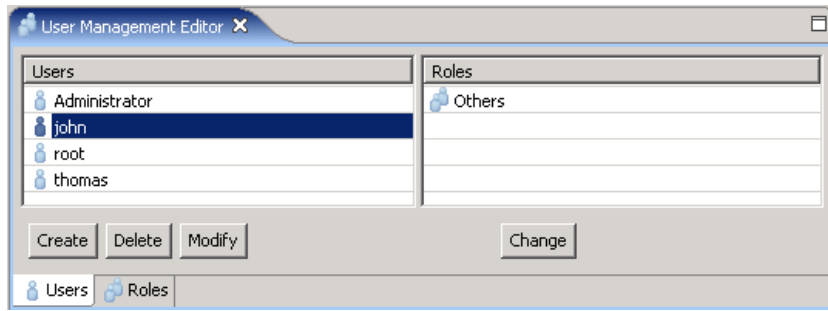
**Figure 7. Selected user**

### 3.1. Create Users and Roles

To create a new user press the “Create” button on the lower left of the editor. After pressing the “Create” button a dialog pops up where you can enter the name, real name and description of the user. The bottom of the dialog contains two lists where you can assign the user to existing roles. The left side of the list shows all available roles. The right side shows all roles which are already assigned. You can assign the user to a role by selecting the role on the left side and press the “=>” button or simply by doubleclicking on a role on the left side. To remove a user from a role you need to select the role on the right side and press the “<==” button or doubleclick on the role.

**Figure 8. Create a new user**

To create more than one user press the “Add” button after entering all user data. This creates the user with the given data and clears the dialog values. You are now able to create another user. Pressing the “OK” button creates the user and closes the dialog. The newly created user(s) is(are) shown in the left table of the “User Management” editor.

**Figure 9. New created user**

Creating a role works the same way like creating a user. You only have to select the “Roles” tab on the lower left of the editor.

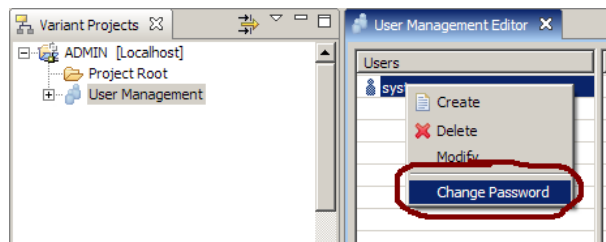
### 3.2. Modify Users and Roles

To modify a user select the user in the left table of the editor and press the “Modify” button (or doubleclick on the user). You can also select more than one user to modify all at once. The modification dialog is opened. This is the same like the creation dialog without the “Add” button. If you have selected more than one user there is a tab for every selected user.

Switch between the tabs to modify each user. Pressing the “OK” button applies the modifications for all users.

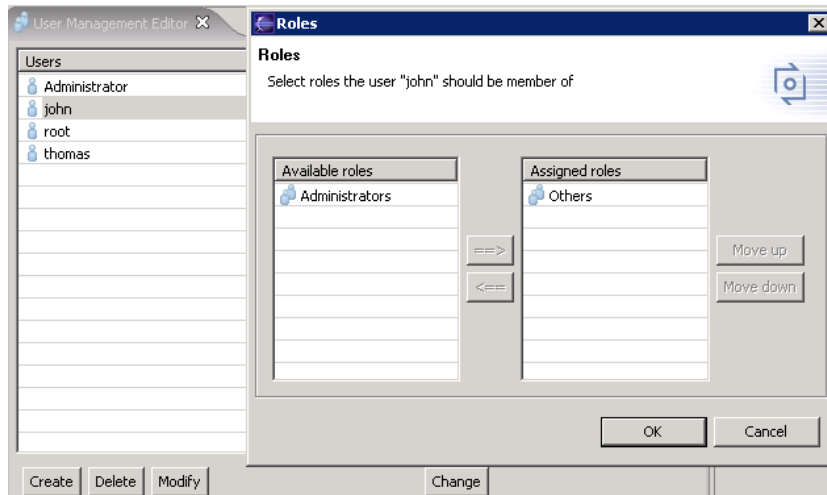
### 3.3. Change User Passwords

To change the user password select the user in the user management and open the context menu and change the password by typing it twice.

**Figure 10. Password Change**

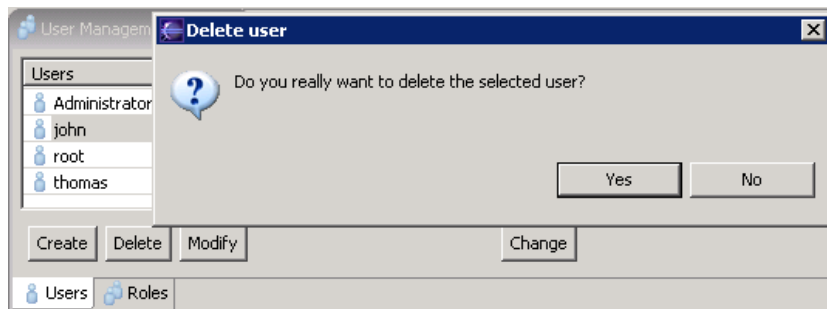
### 3.4. Change assigned Roles for a User

To assign roles to a user or delete roles from a user select the user in the left table of the editor. Press the “Change” button below the list of roles on the right side. A dialog opens showing the available and assigned roles. To assign a role select it on the “Available roles” list and move it to the “Assigned roles” list. Pressing “OK” changes the user data. The changes take effect after the next login of this user.

**Figure 11. Change dialog**

### 3.5. Delete Users and Roles

To delete an existing user select the user in the “User Management” editor and press the “Delete” button below the user list. After pressing “Yes” in the confirmation dialog the selected user is deleted and removed from its assigned roles.

**Figure 12. Delete dialog**

Note: For the correct function of the clients the user management information has to be readable by all users.

## 4. Server Command Line Options

Following list describes the command line options of the server.

- L, /loglevel [LEVEL]: Level for server logging (0-9).
- l, /logfile [FILE]: File for the server logging output.
- r, /rmlog Remove the old log file on startup.
- /config [FILE]: Path to the server configuration file listing command line options one by line.
- p, /port [PORT]: Port for the SOAP server connection (default 4711).
- t, /clienttimeout [SECONDS]: Timeout in seconds before killing dead client connections (default 900 = 15min).
- a, /address [ADDRESS]: Address to bind for the SOAP server connection (default 127.0.0.1). Accepts IP address as well as host name.

-d, /shutdown	Shutdown server after closing last session.
-i, /info	Print server information (XML) on startup.
-h, /help	Show the command help text.
/printinfo	Print server information (XML) and exit.
-P, /plugindir [PATH]:	Semi-colon separated list of additional server plugin directories.
/prolog [PATH]:	Location of the prolog interpreter executable.
-R, /plprog [PATH]:	Location of the prolog resource database (prologrc).
-S, /xsltdir [PATH]:	Location of the directory containing the server XSLT scripts.
/projectsdata [PATH]:	Location of the directory containing the server projects (mandatory).
/disablehistory	Disable the model history.
/service	Start as Windows service.
/install	Install as Windows service.
/remove	Remove Windows service.

Note: The prefix of the long names of the command line options differ for Linux and Windows (“--” on Linux and “/” on Windows).