
pure::variants Server Support Plug-In Manual

pure-systems GmbH

Version 3.2.19 for pure::variants 3.2

Copyright © 2003-2016 pure-systems GmbH

2016

Table of Contents

1. Introduction	1
2. Create A New Variant Server Project	1
3. Import An Existing Variant Server Project	2
4. Change Access Rights	3
5. Change User Password	4
6. Show History Of Model Changes	4

1. Introduction

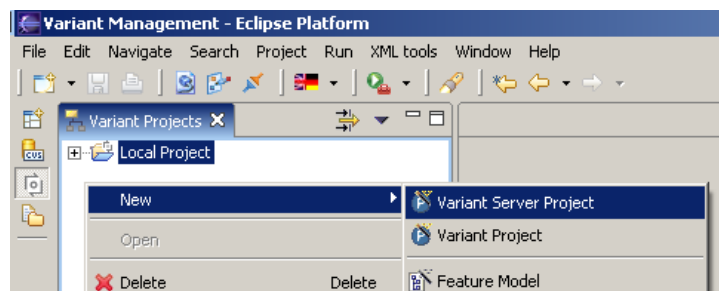
This pure::variants plug-in enables the use of a remote server for a centralized management of variant projects and models.

A printable version of this document is [available](#).

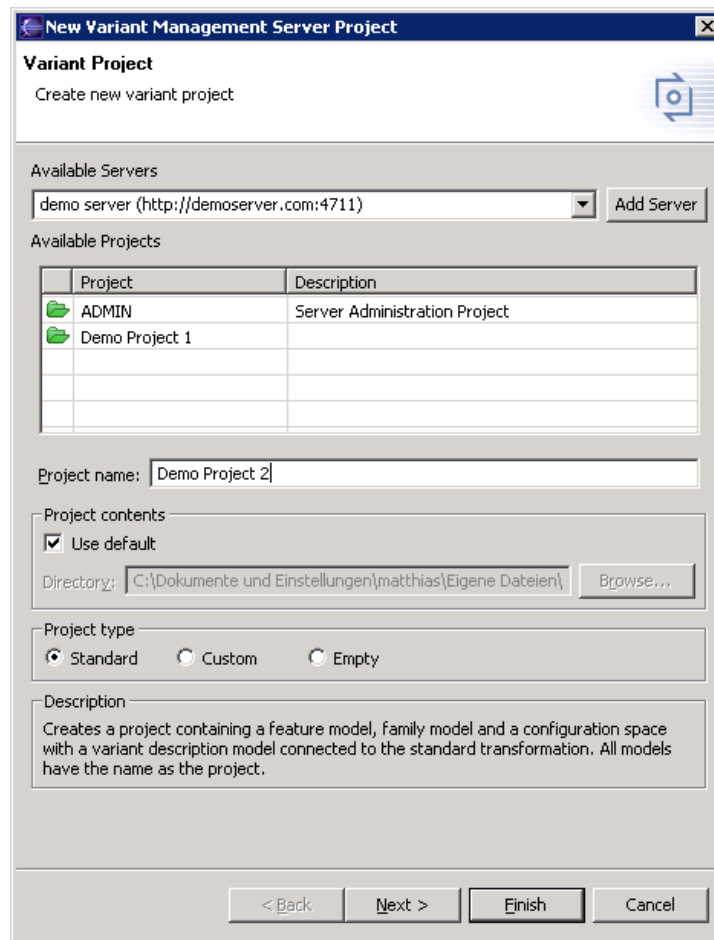
2. Create A New Variant Server Project

To create a new variant server project select “New” -> “Variant Server Project” in the context menu of the “Variant Projects” view. The “New Variant Server Project” wizard appears.

Figure 1. The pure::variants Wiki View (before creating a new page)



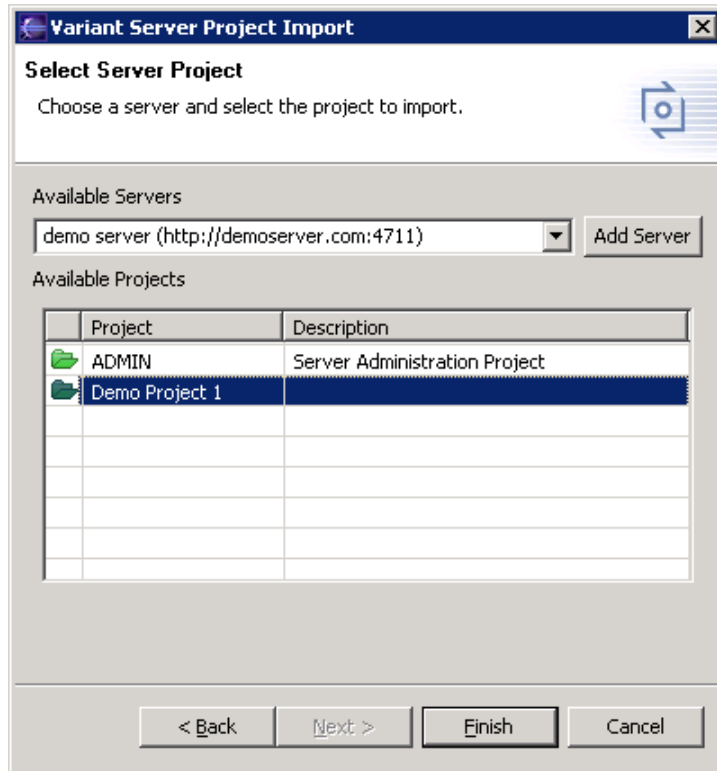
From the “Available Servers” list select the server on which the project should be created. If the requested server is not listed, press the “Add Server” button and enter the URL of the server to add. After selecting a server the “Available Projects” list is filled with all known projects of this server. Now enter the name of the new project, choose the project type, and finish the wizard.

Figure 2. New Variant Server Project Dialog

3. Import An Existing Variant Server Project

To import an already existing server project use the standard eclipse import. For this purpose choose “Import...” from the context menu of the “Variant Projects” view. Select the “Variant Server Project” item from the list and click “Next”.

Figure 3. Import Variant Server Project Dialog

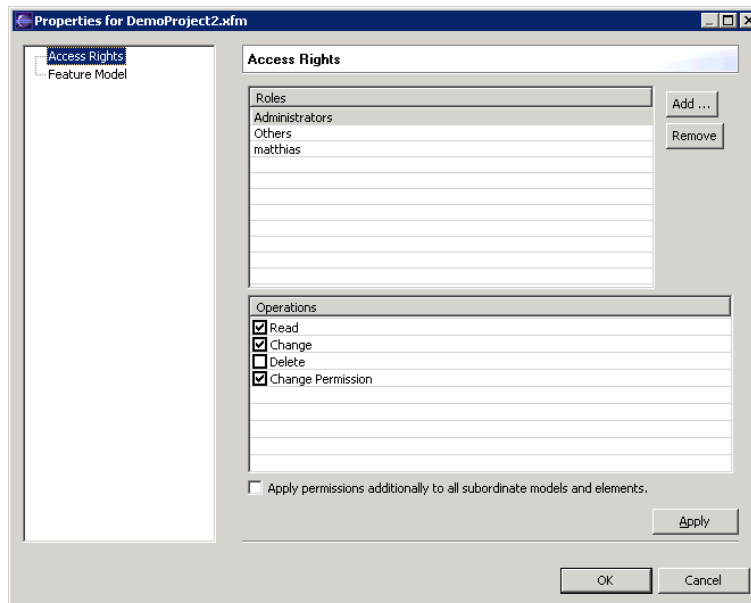


From the “Available Servers” list select the server on which the project should be created. If the requested server is not listed, press the “Add Server” button and enter the URL of the server to add. After selecting a server the “Available Projects” list is filled with all known projects of this server. Select the project to import and press Finish.

4. Change Access Rights

Access rights are available for projects, folders, configspaces, models, and model elements. For changing the access rights for instance of a model, select the model in the “Variant Projects” view and choose “Properties” from the context menu. Select the “Access Rights” page in the opened dialog.

Figure 4. Access Rights Property Page

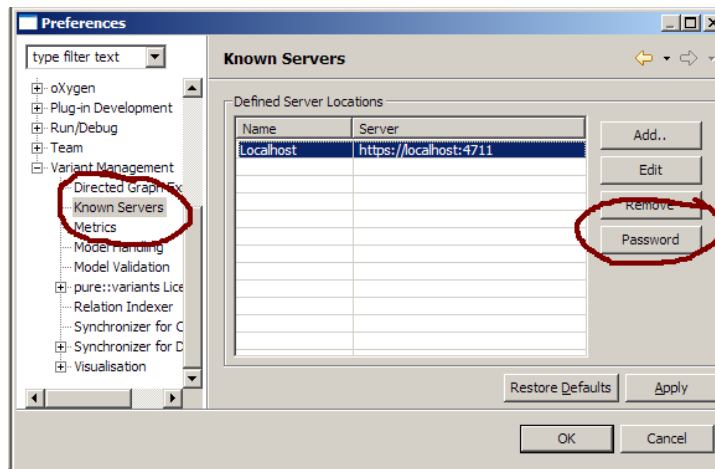


Select the role and change its rights. Press “Apply” or “OK” to set the new access rights. If the “Apply permissions additionally...” box is checked, the new permissions are applied recursively to all subordinate elements resp. models, folders, and configspaces. By pressing the “Add...” button you can add new roles and users to the roles list. To remove a role or user use the “Remove” button. This removes the defined access rights for the selected role or user.

5. Change User Password

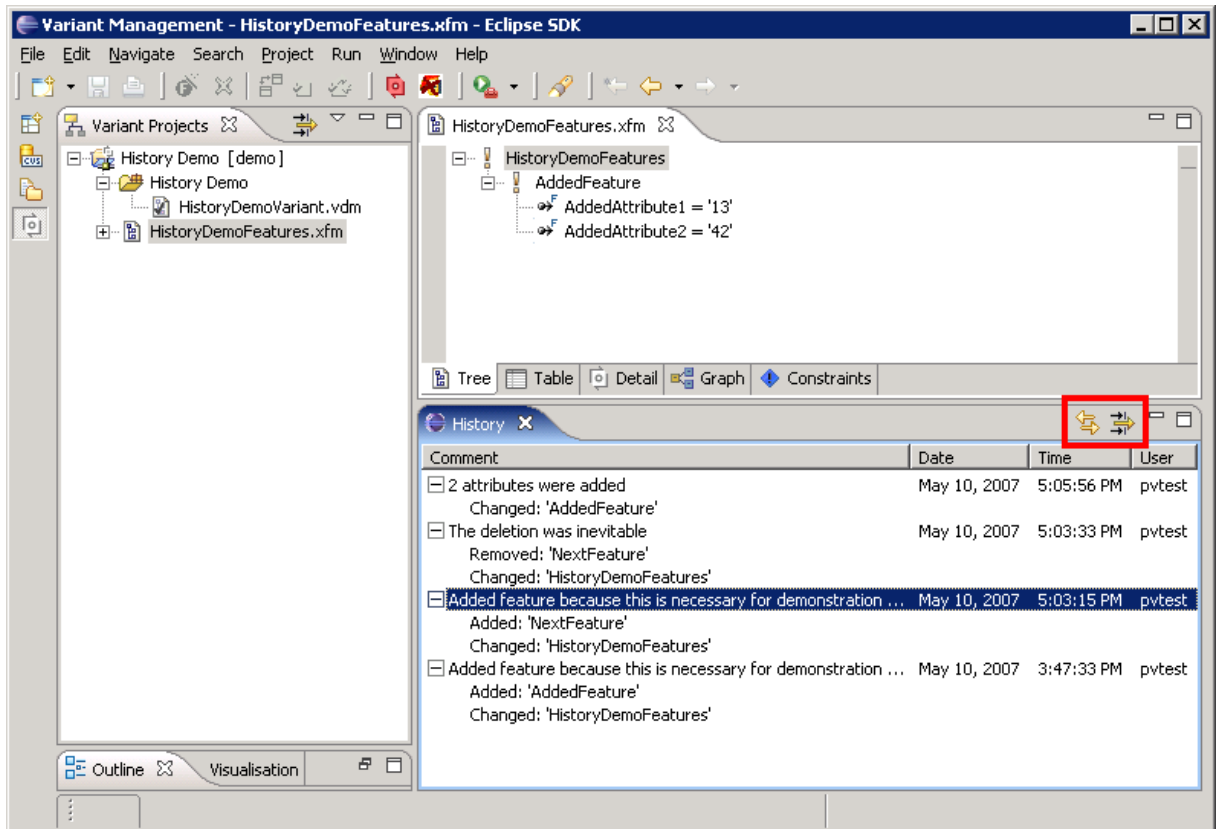
A user can change his or her own password on a server using the Preferences dialog. Open "Variant Management->Known Servers" in "Windows->Preferences". Select the server entry for which the user password shall be changed and then select the button **Password**. Enter the old password and twice the new password to change the password.

Figure 5. Change User Password



6. Show History Of Model Changes

For remote servers with database backend a model change history view is available (see [Figure 6, “History View”](#)). This view shows each change on the elements of a model. The history entries can be commented and filtered.

Figure 6. History View


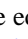
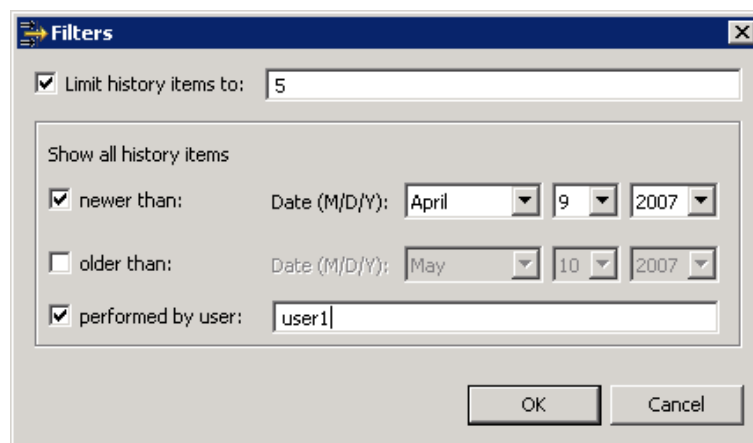
The toolbar of the history view has two buttons. With the left button  it can be switched between showing all changes of the model or only the changes for the selected elements in the editor. With the right button  a filter can be defined for the history view (see [Figure 7, “History View Filter Dialog”](#)). Beside limiting the number of items shown in the history a time period and the user that made the changes can be specified.

Figure 7. History View Filter Dialog

A comment can be added for history entries which do not yet have a comment. Right-click on a change and choose **Set Comment** from the context menu. This opens a dialog where a new comment can be entered (see [Figure 8, “Specify Comment Dialog”](#)). Alternatively a previously entered comment can be chosen from a list.

Figure 8. Specify Comment Dialog

